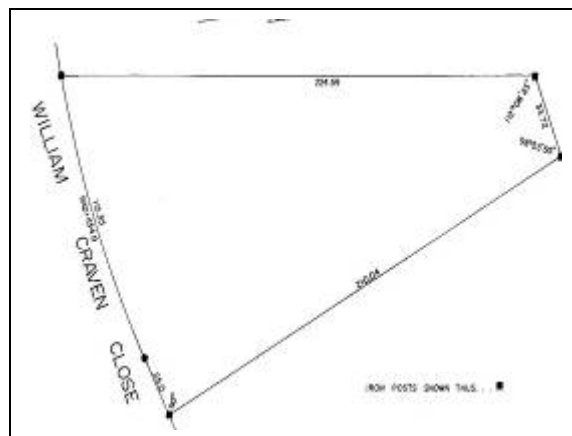


# *Cape Coppermine Building Lot*

*Prime Property \$39,900!*

*A unique building lot on the corner of William Craven Close and Christopher Wren in beautiful Cape Coppermine. Well treed and flat this .43 of an acre awaits your cottage/retirement dream home.*



*A chip shot to Granite Hills Golf Course in a well built up and growing area.*



*Close to a residents only community beach with boat launch and the possibility of a private boat slip.*

*John Angus Realty 345-2425*